

DUCTWORK CRITICAL DETAILS

1

COMPONENTS — All HVAC supply and return ducts, air handlers, and plenums inside and outside the heated space are sealed at all joints and corners, including prefabricated joints, with approved mastic



2

METAL DUCTS — All new duct joints, plenum drives, metal joints to include all slips and drives are mechanically fastened with screws. Tape of any kind is not a mechanical fastener



2

FLEX DUCTS — Flexible ducts are attached at the inner liner using nylon/plastic/ Panduit® straps tightened with a manufacturer approved tool. Tape of any kind is not a mechanical fastener



3

INSULATION — All ducts, plenums, and supply/return boots outside the conditioned space (including exterior wall cavities) must be completely insulated to an installed value of at least R-8



DUCTWORK CRITICAL DETAILS

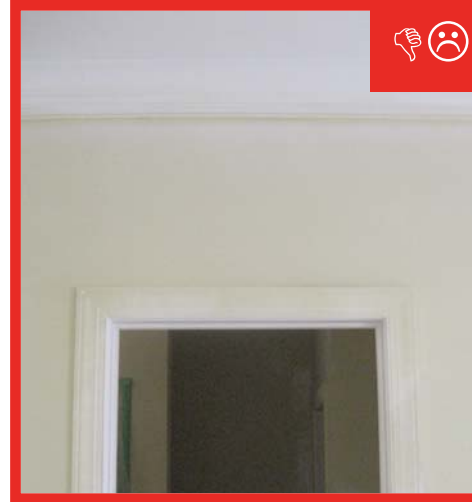
4

NO FAKE DUCTS – Unlined building cavities are not used as ducts



5

ZONAL PRESSURE RELIEF – Conditioned rooms without dedicated returns (except baths, laundry, and closets) have jump ducts, transfer grills, or door undercuts to provide return air paths



5

ZONAL PRESSURE RELIEF – Conditioned rooms without dedicated returns (except baths, laundry, and closets) have jump ducts, transfer grills, or door undercuts to provide return air paths



7

DUCT SUPPORT – Ducts shall be cut to length and supported in such a manner to prevent air flow constriction



DUCTWORK CRITICAL DETAILS

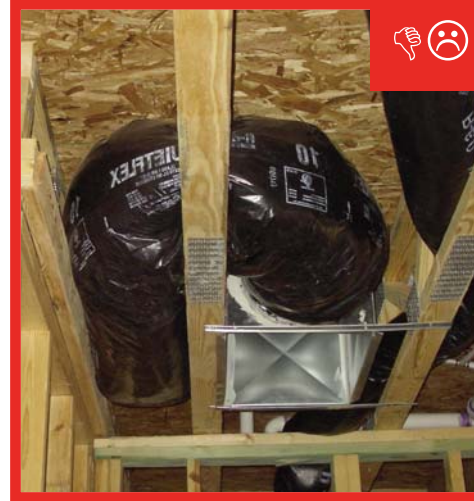
8

SUPPORT & BENDS – Flexible duct (including spot ventilation) is supported at least every 4 feet and has no bends greater than 90°



8

SUPPORT & BENDS – Flexible duct (including spot ventilation) is supported at least every 4 feet and has no bends greater than 90°



9

PENETRATIONS – All HVAC penetrations to exterior/unconditioned space (e.g. chases, shafts, refrigerant lines, etc) are air sealed with foam, caulk, or mastic. NO fibrous insulation is used to fill holes



10

SPOT VENTILATION – Spot ventilation (exhaust) duct work terminates to daylight

