

INSULATION CRITICAL DETAILS

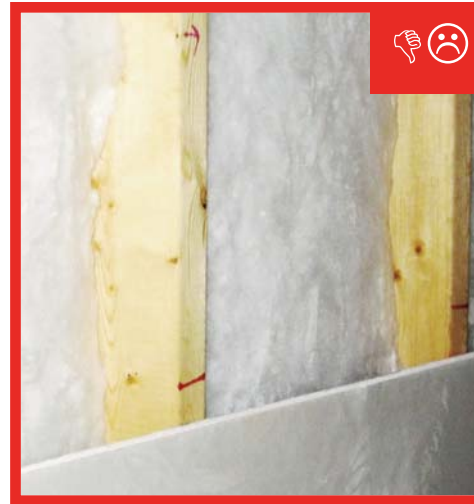
1

NO GAPS/VOIDS – Insulation is installed without gaps/voids. Insulation material is in full contact with all sides of the cavity.



1

NO COMPRESSION/MISALIGNMENT – Insulation is installed without misalignments/compressions. Insulation material is in full contact with all sides of the cavity.



1

NO COMPRESSION/MISALIGNMENT – Insulation is installed without misalignments/compressions. Insulation is cut/split around blocking, plumbing, HVAC, and electrical components



2

FLOOR SYSTEMS – Floor framing is completely filled with insulation or insulation is installed to maintain permanent contact with the sub-floor decking (e.g. bonus room floor, crawl space, cantilever)



INSULATION CRITICAL DETAILS

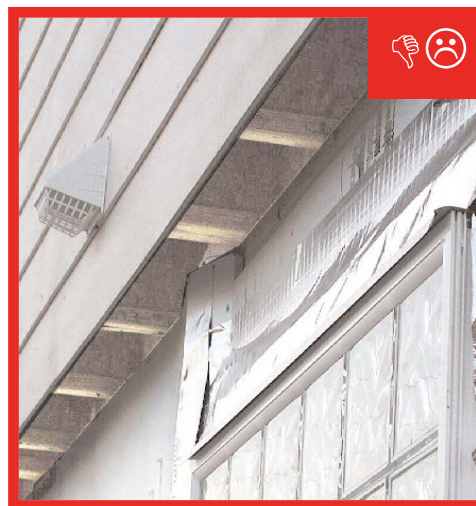
3

CANTILEVERS — Insulate any overhanging floor cavities before closing them in with rigid sheathing



3

CANTILEVERS — Insulate any overhanging floor cavities before closing them in with rigid sheathing



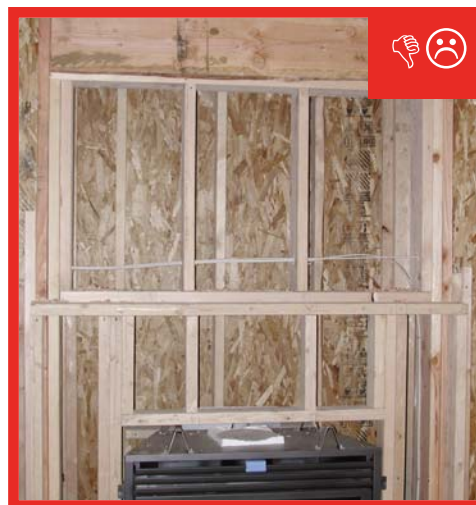
4

TUBS/SHOWERS/FIREPLACES — Insulation is installed behind showers, tubs, and fireplaces on exterior, attic, and party walls and rigid sheathing or other supporting material is installed to hold insulation in place



4

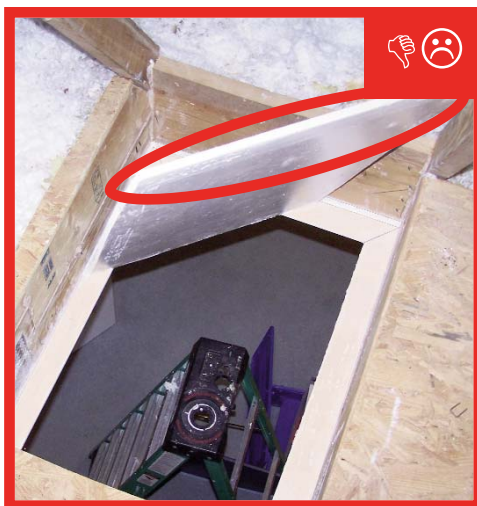
TUBS/SHOWERS/FIREPLACES — Insulation is installed behind showers, tubs, and fireplaces on exterior, attic, and party walls and rigid sheathing or other supporting material is installed to hold insulation in place



INSULATION CRITICAL DETAILS

5

ATTIC ACCESS — Access panels to attic/kneewall or crawlspace, drop down stairs, and whole-house fans are weather stripped and insulated to the same R-value as the surrounding area when possible (min R-10)



6

WIND BAFFLES — Wind baffles are installed where soffit vents are present, including vaulted/cathedral ceilings



6

WIND BAFFLES — Wind baffles are installed where soffit vents are present, including vaulted/cathedral ceilings



7

DOUBLE WALLS — Double wall conditions are backed with a rigid material on the exterior side of the interior wall, or are entirely filled with insulation

